

The LINK

August 2023



LINX is looking for Board Members!



Who are we?

LINX's vision is that individuals with developmental disabilities have opportunities to experience life to their fullest potential. They experience inclusion in taking an active and valued role in society and the opportunity to reside in a community of their choosing. Our mission is that through the connections to their community, LINX strives to enhance the quality of life for adults with developmental disabilities through education, employment, residential, and outreach services.

Who are you?

We are looking for community minded people who want to support LINX's vision and mission by volunteering their time and skills on our board! Board meetings are held the 4th Wednesday of every month and have the flexibility of in person or virtual attendance! There may be minor requests for your time such as art judging, photo opportunities and fundraising events such as Hearts and Heroes!

Interested?

CONTACT BOARD CHAIR ANN
KURLOVICH AT
780-914-8676



Interim Executive Director Laurie Savill
Email: linxexec@linxconnect.ca
Program Operations Manager Katie Porter
Email: linxday@linxconnect.ca
Business Manager Leslie Von Albedyhll
Email: linxadmin@linxconnect.ca
Team Lead Alisha Crawford
Email: Teamlead@linxconnect.ca
Office Assistant Andrea Gibson
Email: linxinfo@linxconnect.ca

EMERGENCY NUMBERS

In order of call priority

Team Lead/AFTER HOURS
Emergency Cell 780-298-9423
Program Operations Manager
Emergency cell 587-336-6672
Interim Executive Director
Emergency cell 587-989-5691

Dates to remember:

August 7 – Closed for Civic Holiday
September 4 – Closed for Labour Day

Board Members

Ann Kurlovich – Chairperson
Open – Vice-Chairperson
Shannon Gray-Henry – Secretary
Leanne Millar - Treasurer






LINX Bottle Pick-Up

Give us a call, and we will pick up your bottles and give you a charitable tax receipt for your donation!



You can now safely donate to LINX online at www.linx.ngo

#106, 5708 – 47th Street Leduc, Alberta T9E 6Z9 780~980~9423

www.linx.ngo Follow @LINXconnect on all Social Media     



Program Report

As you know, our former Office Assistant Alisha Crawford accepted the role of Team Lead in May. This meant that we had big shoes to fill at our front desk! We are so excited to introduce Andrea Gibson as the LINX Office Assistant! Andrea is no stranger to LINX, prior to her recent maternity leave, she was a Job Coach! In addition to her new role, Andrea is finishing up her diploma in Business Administration, specializing in Human Resources. Next time you are at the office, please give Andrea a warm welcome! We are so excited to have Andrea and her skillset join our administrative team.



Special Olympics

Special Olympics Alberta asked LINX to share their information in our newsletter and we are more than happy to do it.

Registration and Annual Meeting
August 21, 2023 @ Leduc Library Alex A Room

For more information visit

<https://www.specialolympics.ca/alberta/leduc>

Fall Program Preview:

Bowling

August 31 to December 14

@ Leduc Lanes

\$160.00

New Programs Coming Soon:

Swimming – Floor Hockey (Ringette) - Skiing

August Menu
Day Program

August 2 – Healthy Black Bean Casserole
August 9 – Poppy Seed Fruit Salad
August 16 – No Bake Granola Bars
August 23 – Cabbage Roll Casserole
August 30 – Potato, Broccoli, Cheese Soup

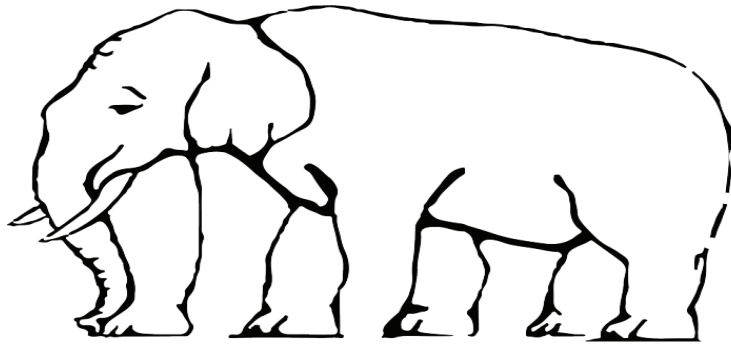
August
The SIL Evening Cooking Class

August 2nd 4pm-7pm
August 16th 4pm-7pm

Mandt Moment

People perceive what they are programmed to perceive. When people look at something or hear something, they often hear and see what they expect or what they are sensitive to. When people expect negatives, they look for them! When people expect judgement or anger, they interpret the actions of others through this lens. This is especially present during conflict.

Look at the elephant. How many legs do you see? Elephants typically have 4 legs – we are programmed to look for 4 legs. How many legs do you see when you start looking outside of what you are programmed to see? Does your perception change? What defines a leg? Unfortunately, I don't have the 'right' answer to the question of "how many legs does the elephant have?", but I hope the next time you are faced with conflict, you are able to remember this elephant and use perception checking. This will require you to describe what you feel, hear and/or see non-judgmentally to interpret it in at least two ways. Go beyond what you are programmed to perceive!



Team Lead Report

We try to create a positive environment at LINX. We understand that things aren't always perfect, but we strive to create the best atmosphere for all that walk through our doors. Some of the things we do:

- 🐾 Provide opportunities for employee and client engagement.
- 🐾 Strive for a positive culture.
- 🐾 Supply the tools and equipment needed for clients and staff.
- 🐾 Believe in diversity, equity, and inclusion.
- 🐾 Have fair policies.
- 🐾 Always working towards health and safety.
- 🐾 Supportive leadership.

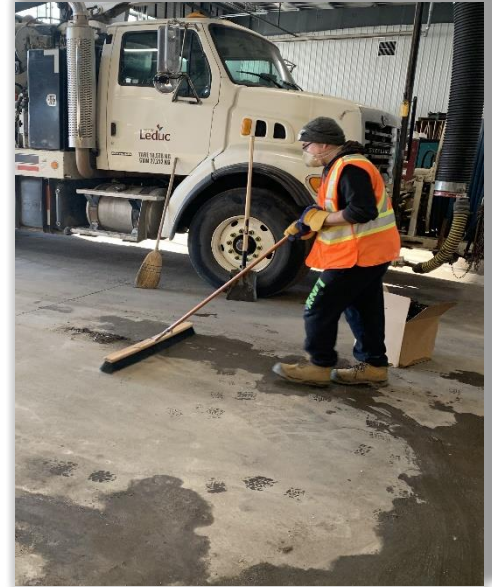
We hope these things and more create a sense of belonging, improve productivity, boost morale, increase loyalty, and reduce turnover at LINX. Throughout the next several newsletters, I will showcase in detail how we aim to achieve a positive workplace through the examples mentioned above.

Our “...of the month” club!

There are so many people who make our world a better place. So, we have decided they needed individual recognition. Please help us celebrate our Employer, Client, and Staff of the Month. If you see someone in any of these categories that you would like to see recognized, please let us know!

Employer of the Month: City of Leduc

The City of Leduc has been a LINX employer for 15 years! They have been willing to work with LINX to best support their employees, not only in gaining new skills but also in enjoying what they do each week.



Client of the Month: Thelma Almas

Thelma started with LINX in June and has been such a positive addition. She has been flexible and ready to try new activities. She greets staff and peers with a big smile and makes everyone laugh!

- 🐾 What is your favorite animal?
Puppy.
- 🐾 If your life was a movie, what would it most relate to?
Snow White.
- 🐾 What is one lesson you feel you have learned from LINX?
How to be a friend.
- 🐾 How long have you been a client at LINX?
2 months.
- 🐾 What type of music do you listen to?
Jesus music (hymns at church).
- 🐾 If you spent an entire day at a theme park, what would you do?
Disneyland with Mickey and Minnie Mouse.
- 🐾 If you had one superpower, what would it be and why?
To be invisible to scare people for fun. BOO!



Staff of the Month: Robynne Schultz

Robynne is consistently a safe space and strong mentor for coworkers and clients alike. Thank you for all that you do at LINX Robynne! You are so appreciated.

- 🐾 What is a typical workday like for you?
7:45 – 8:45 ISP's/Build lesson plans, connect with coworkers.
8:45 – 12 Client time teaching class.
12 – 12:30 Notes/paperwork.
12:30 – 1 Lunch/connect with coworkers.
1 – 4 Client time teaching class.
4 – 4:45 Notes, build lesson plans, connect with coworkers.
- 🐾 What is your greatest achievement? Ending the day knowing I made a difference.
- 🐾 If you had one superpower, what would it be and why? To bend time so I can get everything done that I want to accomplish in one time frame.
- 🐾 What advice would you give someone who is considering this type of job (or field)? Remember: Listen first! Know: It's not about you. Ask: What are they teaching me right now? Enjoy! It's a great place filled with great people.
- 🐾 How long have you been working at LINX? 12 years.
- 🐾 What is your favorite beverage? Tea or lemon water.
- 🐾 What type of music do you listen to? Anything with an inspiring message.
- 🐾 Who was your idol growing up? My Gramma, she loved and accepted everyone she ever met simply for who they were.



LINX Staff Anniversaries

Thank you to our wonderful LINX staff who have been with us a long time, a short time, and everything in between. We are nothing without you!

August	
David	2020

LINX Employers

M K P Y Q G H R N U F S F W I N C I A L T G O U D W G A E C R B X C Z V N O Y B
V I C H K J J Z S L N J Y X G H A A A M L I W A B Z M U U C A A O X C S Q S Z M
B R I G H T P A T H D A Y C A R E T N E V T U W W A T D T L H N B U Y Y P Y K E
D E V F L V J I X T N X S X H C I G D A T T F C R I E J L K N Z A Q V N Z N R A
H I C J Q V F M S I Z E E G I P C U W S D U B A S L W O T E C K Z K Z F N C F C
Y I L N Q N Z N W H U Y Z B S L C F N M B I L U F I O E C Y M U Z L G D O G Z Q
K K T J E R D I N N Z G L O I A D I I S L L A O L N B T B E S V I J B G M H J O
S Q F T G I K W O W V R H N R K D F S N O T B N S C I D D C A P P F L A M A N Y
O D O N Z P L F K I W T U T S Z R F K D N U M B T V F B N E J U N B S T O V Q R
B E R G P C R I U B E R S D V P P G U D L C L S I I X L S A Z U O O M E C A N A
E H X H H I B V S P P F O Z T S X T F C N I U T R Y R H O O E C T H D W C N D R
Y W S D L J U U E E O J X A R H H N S T N L Y W C Y I E Y G N N S R V A U S M B
S G K L C E P H G U R R X T O W L L P G Y D V Z X D B T S E C A O A Z Y D Q H I
B P S M S F T J N L G D Q Z W Q R P A H A C S U S B V B V I K U B B V F E H R L
E H S C G D C D Q F N M E F Q I P N U N A T F E G U X I N H Z Z D M F A L W K C
A W C D M P R X Y E J K F W G R D Q C F R G U T N O T W R C M R R E Q M Y G S I
U C E O G Y M B N J G O I D E E D E S A F E W A Y A Q P Q R H S C A L I A X K L
M O F N W S W W J M N C N S N N S D D T K R U W T U B S W U I F Y D D L W P I B
O J O A D X E X R L H A H G R T E T W Q H K E N D C T J I H Y C N X M Y B Y K U
N B X L H Y G T H F S I R B U A M R X V M E E F A C X F H C M A X Z Z C U Q S P
T U Y D G E S G I Y C A P D V D R Z N S D S L O V B P W S R L T O P W H S R Q C
D C P S R H N M O U V Z I P D L B C R Y E R H I V V F G B A K P D G V U T A Y U
V Z E L P Y C B Z A S O L Z B A C D Y R E C O R G P O O C T P C W O M R C W U D
K B F E F A I A B K E D V E I M V V P I C V P F M H W S A S D F R C A C I U E E
I Y M D K C K L N S Q J N L G S F E J A P R Z U R E T H M Y T W Q I S H T O S L
T S E U S D E Q H P P N Y A W I R A J Q S C K W Y O T H M A L O N E L Q Y G K Y
Z E A C G T I D O N D S D I N C R L R Z D W J O V Z M E O D U I N E B X O C G T
T W L L H G N I R U T C A F U N A M S L L A F E U L B T O U N P T M H X F V V E
Z C F I V D K X D S E C T D M M I I Z K G R V Z J A A K H G S O C G B T L K J I
A F N E C A L P W E I V E N A L P S G S M G Y P D Q Y U E E H E U N L L E X G C
Z G E R X Z T K B T Z L L I F E S T Y L E S O P T I O N S L S S C G O G D O C O
S X T N I D A I J F O J Q D Q P O G J A T N I W W W E K A C E O E O C E U V V S
F N P V N X H B O K V W A L M A R T X S D N M I C S S Y R N T I L L W Q C L T P
U X H H C R U H C N A C I L G N A S L U A P T S E E O C L O K F U E P O G X W U
Y S P H R E W F P L A L X F G F V R S P O X L S V R H K L R Z N B B E A R X H E
Y R F I Y N Q X R Q U R G L C C I L D B Z U V J A C C L D H M Y Y M K A T K H S
S U M V H I I T E X V H M N D W E N M P B A Q Q B X B A R E X T Q N X W A S Y I
R R X S Y C H E J Y O J W Y Q E F J M T Y P R Y T M Y Y G S V I J K O C Q K F R
D V L F T P G B N E A A L Y T Q P W R L J J I C M J F D N B H B F L E O U O H T
H X F N M B X A P D H Y H Q V M L H C R U H C P I H S W O L L E F C U D E L K N

- 🐾 A and W Nisku
- 🐾 Balloons Bling and Engravable Things
- 🐾 Blue Falls Manufacturing
- 🐾 Bone and Biscuit
- 🐾 Boston Pizza
- 🐾 Boys and Girls Club of Leduc
- 🐾 Brightpath Daycare
- 🐾 Canadian Tire
- 🐾 City of Leduc
- 🐾 Connectivity Dance Studio
- 🐾 Coop Grocery
- 🐾 Days Inn and Suites
- 🐾 Daystar Church
- 🐾 Dollarama
- 🐾 Flaman
- 🐾 From the Sole
- 🐾 Gateway Family Church
- 🐾 Leduc Arts Foundry
- 🐾 Leduc Fellowship Church
- 🐾 Leduc Public Library
- 🐾 Leduc Representative
- 🐾 Lifestyle Options
- 🐾 The Lighthouse Cowork
- 🐾 McDonalds Leduc
- 🐾 No Frills
- 🐾 Planeview Place
- 🐾 Renewed Resilience
- 🐾 RiseUp Society
- 🐾 Royal Hotel
- 🐾 Safeway
- 🐾 Salvation Army
- 🐾 Sobeyes Beaumont
- 🐾 SRTraining
- 🐾 St Pauls Anglican Church
- 🐾 Staples
- 🐾 Subway Leduc Common
- 🐾 The Pet Hospital
- 🐾 WalMart
- 🐾 Wendys



CREATIVE101

ARE PROUD TO SUPPORT

- DATABASE PROGRAMMING
- HR & STAFF SCHEDULING SOFTWARE
- ONLINE SAFETY TRAINING

- GRAPHIC DESIGN
- WEBSITE DESIGN
- SOCIAL MEDIA MANAGEMENT

WWW.INMCA.COM • WWW.CREATIVE101.CA

